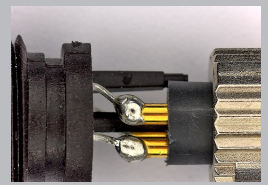
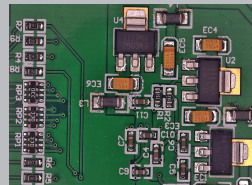
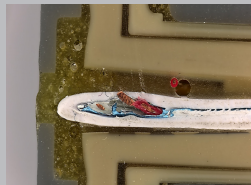
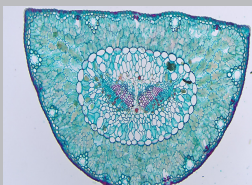




HDMI02MDPX

HDMI MICROSCOPE CAMERA

- ▶ FHD resolution
- ▶ On screen measurement
- ▶ Video record
- ▶ Super compact



HDMI02MDPX

The HDMI02MDPX, high-resolution colour camera is packed with many innovative features to simplify your work. The HDMI02MDPX is the perfect solution for professionals in need of an accurate measurement camera on a budget.

With the HDMI02MDPX users can enjoy fast, comfortable, and user-friendly on-screen operation – improving sample evaluation, measurement, facilitating effective collaborations, and documentation in high resolution.



High quality and effective

The DeltaPix HDMI02MDPX microscope camera has C-mount interface making them easily and cost-efficiently fitted on most standard microscopes.



User-friendly Camera

Plug and play – the HDMI interface provides high speed and ease of installation on any monitor with HDMI input.

No need for computer, because the HDMI02MDPX microscope camera has a built-in software.

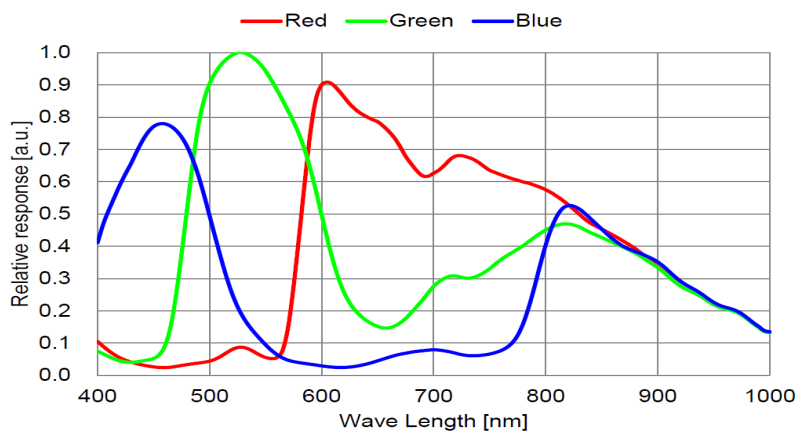


Typical applications: ✓ Material science ✓ Metrology ✓ Quality control ✓ Dark Field ✓ Bright Field ✓ Histology ✓ Pathology ✓ Semiconductor inspection

Spectral Sensitivity

Spectral Sensitivity Characteristics

(Excludes lens characteristics and light source characteristics.)



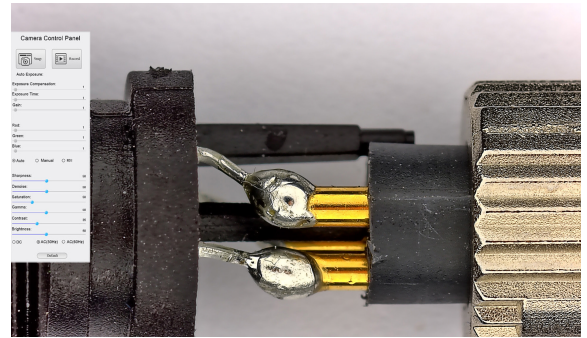
Why choose HDMI02MDPX?

DeltaPix Build-in Software

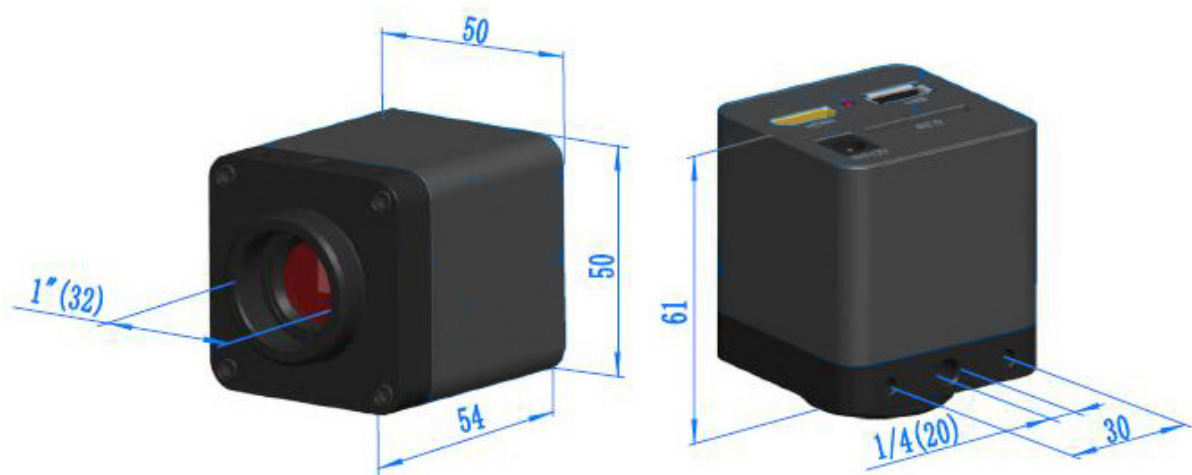
The HDMI02MDPX camera has the state of the art software built-in software that provides a powerful platform for precise measurements, image capturing, and video recording.

Onboard measurement tools:

- Angle
- Four point angle
- Point
- Arbitrary line
- Three point line
- Horizontal line
- Vertical line
- Parallel
- Three point vertical
- Rectangle
- Curve
- Ellipse
- Five point ellipse
- Three point circle
- Center + radius circle
- Arc
- Text
- Polygon
- Annulus



Camera Dimensions



Features

HDMI02MDPX	
	HDMI02MDPX
Live preview resolution	1920 x 1080 @60FPS (HDMI)
Still image resolution	2Mpixels (1920x1080)
Record video	FHD Video
Software	Built-in, UI in English /Chinese / Korean / Thai / French / German / Japanese / Italian
Sensor size	1/2.8" Sony back illuminated Exmor sensors 5.57mm x 3.13mm
Pixel size	2.9µm x 2.9µm
G Sensitivity Dark Current	1300mv with 1/30s
Exposure mode	Automatic or Manual
Color balance	Automatic, Manual or ROI
Interface	HDMI1.4
Data format	Still image, JPEG H264 encoded video
Minimum requirements	Full HD monitor with HDMI input
Accessories	Mouse, 32GB High speed SD card and 12V power supply.

DeltaPix Aps, Hassellunden 16,
DK-2765 Smorum Denmark
Telephone:+45 46760205
E-mail: deltapix@deltapix.dk