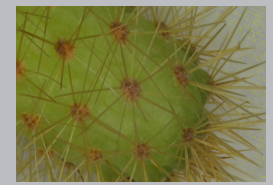
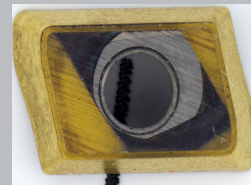
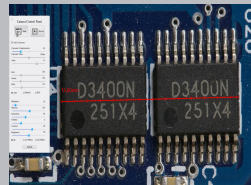
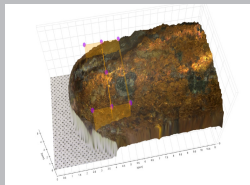
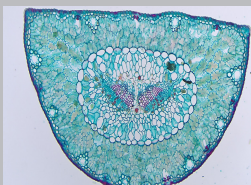




H4KAWSD08DPX

3 IN 1 MICROSCOPE CAMERA

- ▶ 4K resolution
- ▶ On screen measurement
- ▶ Topography 3D
- ▶ Motorized Focus
- ▶ HDMI, USB, and WiFi



H4KAWSD08DPX

High-resolution microscope camera with built-in motorized focus for uncompromising image quality and ease of use. The H4KAWSD08DPX produces high-resolution images with vibrant natural colors suited also for critical applications like Pathology and likewise.

With the H4KAWSD08DPX users can enjoy fast, comfortable, and user-friendly on-screen operation with motorized focus – improving sample evaluation, measurement, facilitating effective collaborations, and documentation in high resolution. For more advanced applications the user has the option to connect the camera to a PC via USB 3.0 or WiFi and use DeltaPix InSight in order to make further analysis and automatically extended focus images. Moreover, this camera provides a completely new platform for inspection applications making inspection easy and comfortable with its autofocus ability.



High quality, cost effective and flexible

The DeltaPix H4KAWSD08DPX microscope camera has C-mount interface making them easily and cost-efficiently fitted on most standard microscopes. Additionally, it has multiple interfaces and built-in motorized focus providing unmatched versatility for any use case.



User-friendly Camera

Plug and play – the HDMI interface provides high speed and ease of installation on any 4K monitor with HDMI input.

No need for computer, because the H4KAWSD08DPX microscope camera has a built-in software. Option to use it with PC software or Smartphone app.

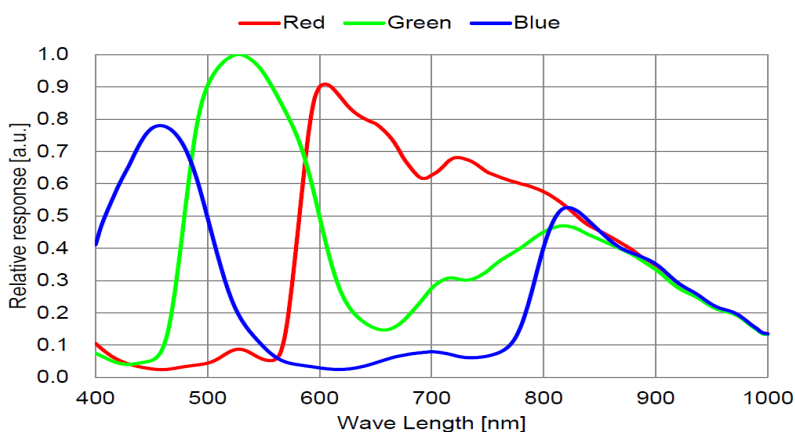


Typical applications: ✓ Documentation and publishing ✓ Material science ✓ Metrology ✓ Quality control ✓ Dark Field ✓ Bright Field ✓ Histology ✓ Pathology ✓ Semiconductor inspection ✓ Digital Classroom

Spectral Sensitivity

Spectral Sensitivity Characteristics

(Excludes lens characteristics and light source characteristics.)



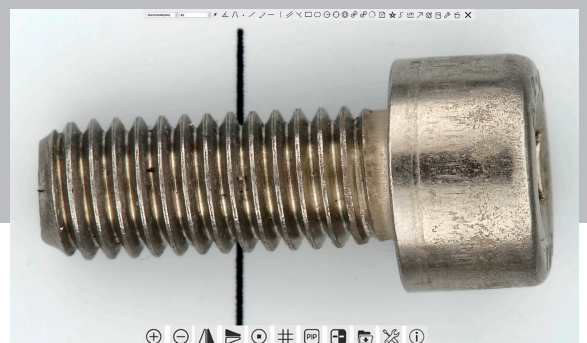
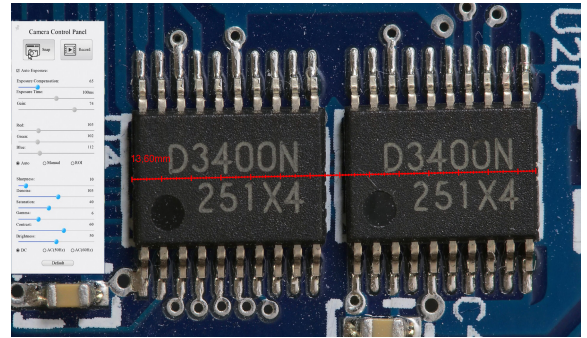
Why choose H4KAWSD08DPX?

DeltaPix Build-in Software

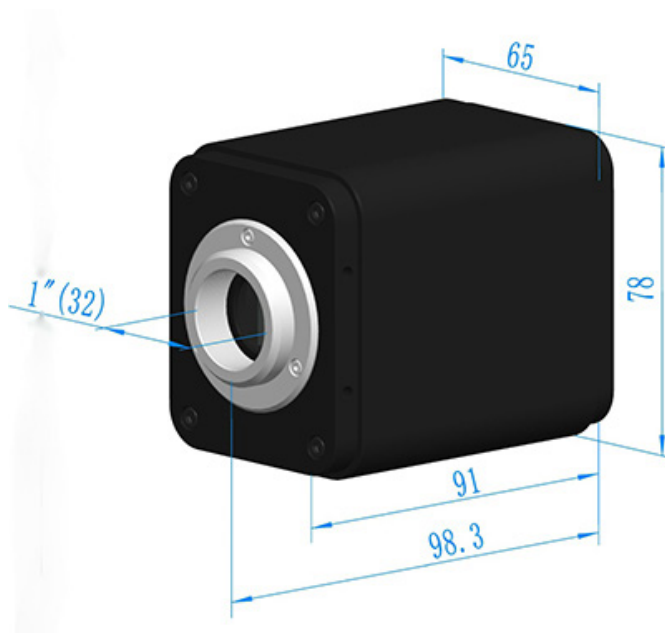
The H4KAWSD08DPX camera has the state of art software built-in software that provides a powerful platform for precise measurements, image capturing, and video recording.

Onboard measurement tools:

- Angle
- Four point angle
- Point
- Arbitrary line
- Three point line
- Horizontal line
- Vertical line
- Parallel
- Three point vertical
- Rectangle
- Curve
- Ellipse
- Five point ellipse
- Three point circle
- Center + radius circle
- Arc
- Text
- Polygon
- Annulus



Camera Dimensions



Features

H4KAWS08DPX	
	H4KAWS08DPX
Live preview resolution	3840 x 2160 @60FPS (HDMI) 1920 x 1080 @60FPS (HDMI) 3840 x 2160 @30FPS (USB 3.0) 3840 x 2160 @30FPS (WiFi)
Still image resolution	8.3Mpixels (3840x2160)
Record video	4K Video
Software	Built-in, UI in English /Chinese / Korean / Thai / French / German / Japanese / Italian InSight Basic (Included) Free Android APP
Sensor size	1/1.8" Sony back illuminated Exmor sensors 7.68mm x 4.32mm
Pixel size	2µm x 2µm
G Sensitivity Dark Current	505mv with 1/30s 0.1mv with 1/30s
Exposure mode	Automatic or Manual
Color balance	Automatic, Manual or ROI
Motorized focus	Yes. Autofocus and Manual
Interface	HDMI2.0, USB 3.0, and WiFi
Data format	Still image, JPEG or Tiff H264 or H265 encoded video
Minimum requirements	4K/Full HD monitor with HDMI input
Accessories	Mouse, tripod mount adapter, 32GB High speed SD card and 12V power supply.
Optional	Software modules, InSight 4K Basic plus and Z-Pack for H4KAWS08DPX

DeltaPix Aps, Hassellunden 16,
DK-2765 Smorum Denmark
Telephone:+45 46760205
E-mail: deltapix@deltapix.dk