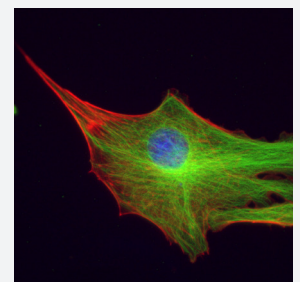
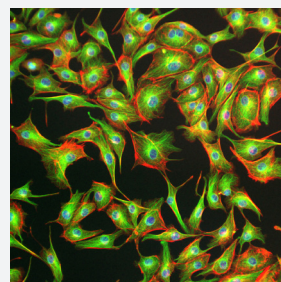
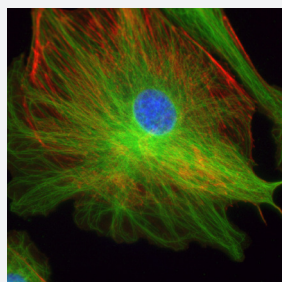
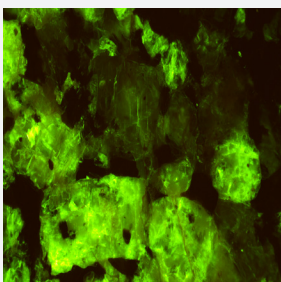
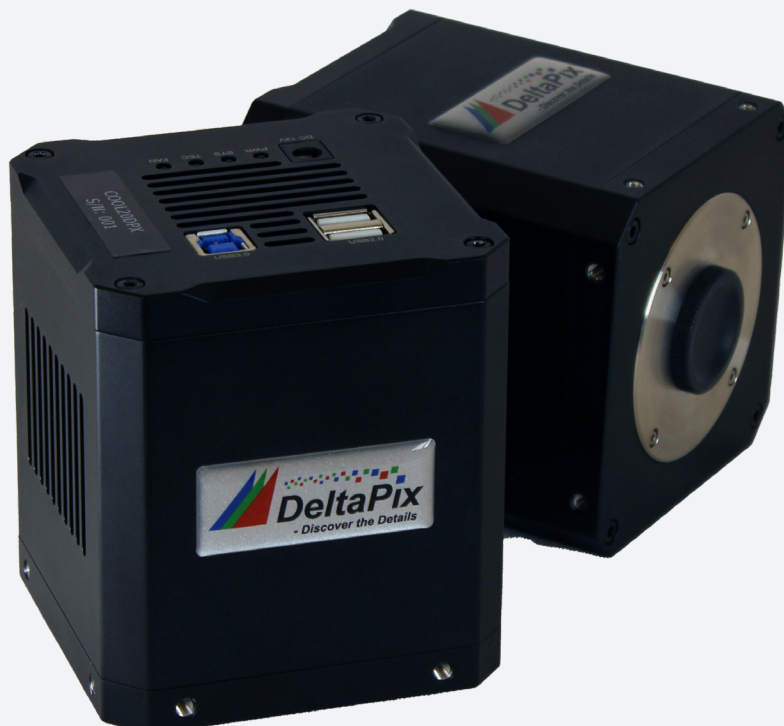




# COOLED CAMERAS

- ▶ High resolution
- ▶ Peltier-cooled
- ▶ Ultra sensitive
- ▶ High-speed live video
- ▶ High-quality Sony sensor



# COOLED Cameras

DeltaPix cooled microscope cameras offer fast and precise high-resolution live video streams as well as still images! User-friendly setup for everyday use, with a first in class price/performance ratio.

The Cooled DPX camera series is especially suited for low light applications, due to its high sensitivity, and applications in which a high frame rate and is required.

The Cooled DPX camera series is based on a high-quality Sony Exmor™ sensor for excellent image quality, sensitivity, speed and build-in advanced two-stage peltier cooling technology cooling up to 42°C below ambient temperature. This will greatly increase the signal to noise ratio and decrease the image noise.



## High quality, cost effective and flexible

The Cooled DPX microscope camera series has C-mount interface making them easily and cost efficiently fitted on most standard microscopes.



## User-friendly Camera

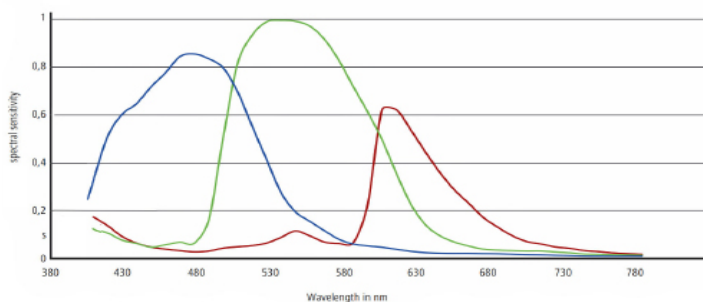
Plug and play – the USB 3.0 interface provides high speed and ease of installation on any computer.



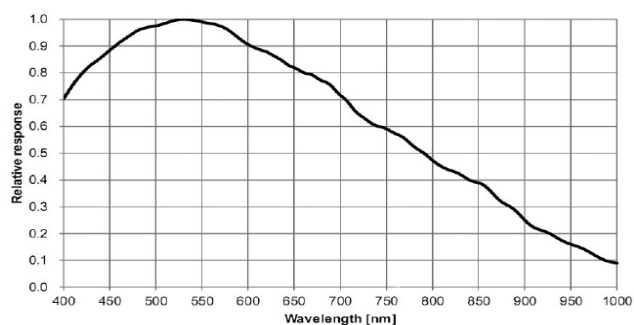
**Typical applications:** ✓ Material science ✓ Metrology ✓ Dark Field ✓ Bright Field ✓ Fluorescence ✓ Cytology ✓ Biology

## Spectral Sensitivity

### Colored models



### Monochrome models



## COOL DPX cameras

# Features

	COOL07DPX (C) or (M)	COOL09DPX	COOL20DPX
Live preview resolution	3200 x 2200 @12FPS (C) 1600 x 1100 @33FPS (C) 3200 x 2200 @51FPS (M) 1600 x 1100 @133FPS (M)	3000 x 3000 @40FPS(C) 1500 x 1500@126FPS 1000 x 1000@188	5440 x 3648@5FPS 4096 x 2160@10FPS 2736 x 1824@15FPS
Still image resolution	7 Mpixels (3200x2200) 1.76Mpixels(1600 x 1100)	9Mpixels (3000x3000) 2.25Mpixels (1500x1500) 1Mpixels(1000x1000)	19.84 Mpixels 5440 x 3648 8.84Mpixels 4096 x 2160 5Mpixels 2736 x 1824
Sensor size	1.1" Sony Exmor 14.4mm x 9.9mm	1" Sony sensor 11.28mm x 11.28mm	1" Sony sensor 13.06mm x 8.76mm
Pixel size	4.5µm x 4.5µm	3.76µm x 3.76µm	2.4µm x 2.4µm
Exposure time	0.1 milliseconds – 3600 Seconds		
Gain	1-100		
Sensitivity	2058mv with 1/30s (C) 3354mv with 1/30S (M)	534mv with 1/30s (C)	462mv with 1/30s
Shutter	Global shutter	Electronic rolling shutter	
Exposure mode	Automatic or Manual		
White balance	Automatic, manual or spot white balance		
Cooling	Peltier cooling		
Power	12V		
Data interface	USB 3.0		
Dimensions	96.5mm x 86mm x 86mm		
Weight	934g		
Data format and compression	24-bit uncompressed Tiff, 24bit JPEG compressed and 24-bit loss-less compressed JPEG2000		
Minimum PC requirements	Intel I5 (quad core) CPU 4 GB RAM 15 GB free hard disk space USB 3.0 port Windows 8 and 10 64 bit		
Software	DeltaPix InSight Basic included		

DeltaPix Aps, Hassellunden 16,  
DK-2765 Smorum Denmark  
Telephone:+45 46760205  
E-mail: [deltapix@deltapix.dk](mailto:deltapix@deltapix.dk)