



# USB6DPX

## Excellent imaging performance

### Sony professional CMOS sensor

- 6 megapixel sensor-IMX178
- Sensor Size-1/ 1.8"
- Pixel Size-2.4x2.4 $\mu$ m
- Resolution -3072 x 2048

### ISP color-interpolation algorithm

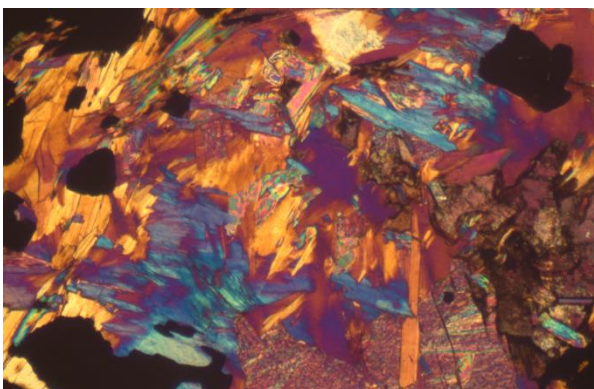
Effectively improve the color deviation of the sensor  
Perfectly restore the true color of the sample

### USB3.0 Stable high-speed transmission

Simple and convenient while ensuring a stable rate  
At full resolution, 40 fps rapid imaging can be achieved

### Supports 4 Cameras Simultaneously in SDK

Automatic matching data bandwidth algorithm Achieve the state of 4 cameras running synchronously in SDK

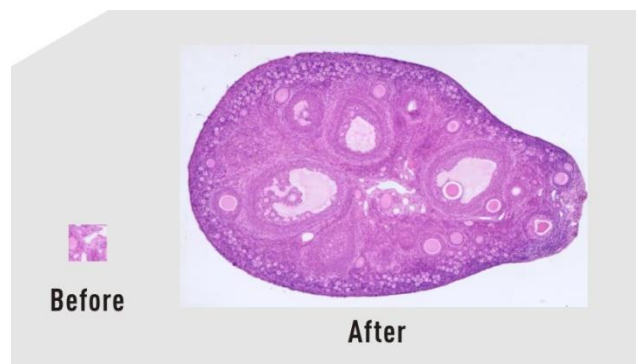


## Revolutionary imaging software

From the user's point of view, redefining the image acquisition- editing - measurement - report output workflow process.

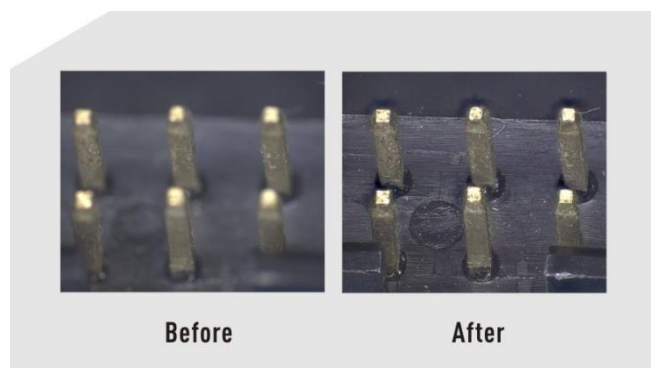
### Real-time image stitching

Moving the stage to get full field view in a few seconds



### Real-time depth-of-field fusion

Turning the focus knob to capture different depth of field points



## USB6DPX Specification

Product Model	USB6DPX
Sensor Model	IMX178LQJ-C
Sensor Type	CMOS
Sensor Size	1/1.8"
Color/Mono	Color
Pixel Size	2.4 x 2.4(μm)
Resolution	3072(H) x 2048(V)
Frame	41fps(3072x2048) 41fps(1536x1024 2x2bin)
Shutter Mode	Rolling
Exposure Time	0.13ms-15s
Automatic Set	Exposure, Color Scale, White Balance
Manually Set	Exposure, Gain, Noise Reduction, Gamma, Flat Field Correction
Color Temperature	2000-15000K
ADC Depth	12Bit
PC Software	Capture V2.0
Picture Format	JPG / PNG / TIFF
Operating System	Windows is supported and Linux/Mac is under development
PC Configuration	CPU: Intel Core i5 or better(Quad or more Core), RAM: 8G or more, OS: Windows 7/8/10 64bit
Multiple Cameras	Supports 4 Cameras Simultaneously in SDK
Data Interface	USB 3.0
Optical Interface	Standard C Mount
Camera Size	68 x 68 x 46 mm
Camera Weight	330 g

## USB6DPX Design

- Meticulous CNC arc processing
- Environmental protection spraying
- Stainless steel C ring with no debris

## Capture V2.0 software feature function

Intelligent 12-bit ISP color reproduction

Real-time depth of field fusion (Option)

Real-time image stitching (Option)

Real-time fluorescence image synthesis and editing

HDR image synthesis

Micro-imaging-based intelligent automatic exposure

Smart measurement workflow

Implements multiple iterations of workflow execution

Supports single shot, delayed camera

Automatic video and delay video generation

Output format selection

User parameter group save and load

Dynamic \ static measurement, layered measurement

Supports measuring gauges, layers, precision, naming, style

Implements drawing: points, lines, rectangles, polygons, circles, arcs, angles

Data export as TXT or Excel

Report generation and printing

