



USB20DPX

Excellent imaging performance

Sony professional CMOS sensor

- 6 megapixel sensor-IMX183 · Sensor Size-1"
- Pixel Size-2.4x2.4 μ m · Resolution -5472 x 3648

ISP color-interpolation algorithm

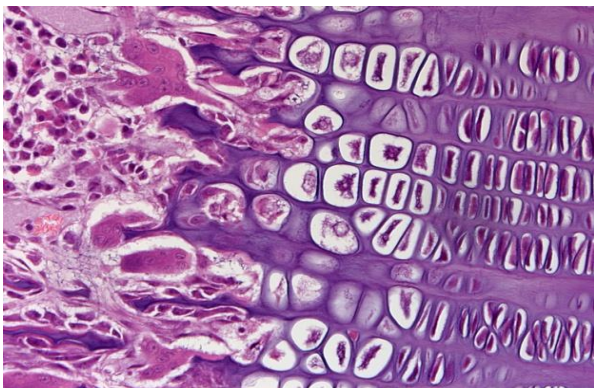
Effectively improve the color deviation of the sensor
Perfectly restore the true color of the sample

USB3.0 Stable high-speed transmission

Simple and convenient while ensuring a stable rate
At full resolution, 15 fps rapid imaging can be achieved

Supports 4 Cameras Simultaneously in SDK

Automatic matching data bandwidth algorithm Achieve
the state of 4 cameras running synchronously in SDK

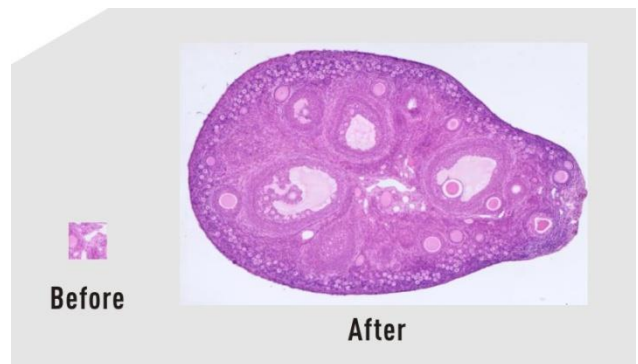


Revolutionary imaging software

From the user's point of view, redefining the image acquisition - editing - measurement - report output workflow process.

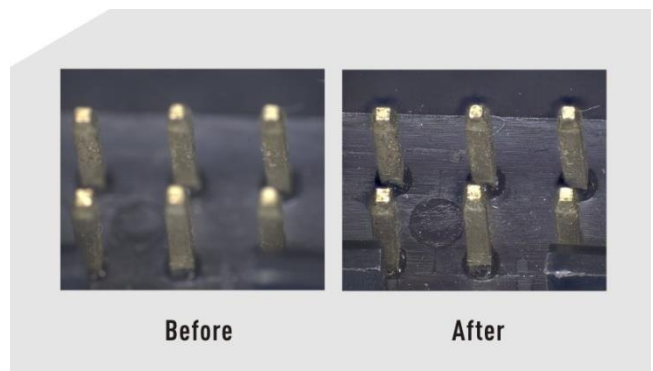
Real-time image stitching

Moving the stage to get full field view in a few seconds



Real-time depth-of-field fusion

Turning the focus knob to capture different depth of field points



USB20DPX specification

Product Model	USB20DPX
Sensor Model	IMX183CQJ-J
Sensor Type	CMOS
Sensor Size	1"
Color/Mono	Color
Pixel Size	2.4 x 2.4(μm)
Resolution	5472 (H) x 3648(V)
Frame	15fps(5472x3648) 53fps(2736x1824 2x2bin) 67fps(1824x1216 3x3bin)
Shutter Mode	Rolling
Exposure Time	0.13ms-15s
Automatic Set	Exposure, Color Scale, White Balance
Manually Set	Exposure, Gain, Noise Reduction, Gamma, Flat Field Correction
Color Temperature	2000-15000K
ADC Depth	12Bit
PC Software	Capture V2.0
Picture Format	JPG / PNG / TIFF
Operating System	Windows is supported and Linux/Mac is under development
PC Configuration	CPU: Intel Core i5 or better(Quad or more Core), RAM: 8G or more, OS: Windows 7/8/10 64bit
Multiple Cameras	Supports 4 Cameras Simultaneously in SDK
Data Interface	USB 3.0
Optical Interface	Standard C Mount
Camera Size	68 x 68 x 46 mm
Camera Weight	330 g

USB20DPX Design

- Meticulous CNC arc processing
- Environmental protection spraying
- Stainless steel C ring with no debris

Capture V2.0 software feature function

- Intelligent 12-bit ISP color reproduction
- Real-time depth of field fusion (Option)
- Real-time image stitching (Option)
- Real-time fluorescence image synthesis and editing
- HDR image synthesis
- Micro-imaging-based intelligent automatic exposure
- Smart measurement workflow
- Implements multiple iterations of workflow execution
- Supports single shot, delayed camera
- Automatic video and delay video generation
- Output format selection
- User parameter group save and load
- Dynamic \ static measurement, layered measurement
- Supports measuring gauges, layers, precision, naming, style
- Implements drawing: points, lines, rectangles, polygons, circles, arcs, angles
- Data export as TXT or Excel
- Report generation and printing

